

# Lighting Technical Specification

## Introduction & Brief:

### Introduction

This document includes all relevant information for the equipment used in an event. Relevant information includes lighting fixture, make, model, quantity of fixture, weight, power consumption and ownership in addition to the location of the fixture in the event and the DMX address of the fixture. Equipment includes all lighting fixtures in addition to power distribution, rigging hardware and control surfaces.

### Brief

You are part of a touring company with a small band going round the UK. you need to produce a lighting tech spec to send to the venue. This needs to include:

- Rig Plans
- Weight of each bar
- Power draw overall
- Cable picking list etc
- What you're "bringing" vs what you need to "provide"

A member of your crew broke their wrist last week, your band has a diverse make up of ethnicities and your LX2 is a woman/nonbinary. Include in your tech spec any accessibility, inclusivity and diversity issues that may occur and what you need to do to allow everyone to be able to work

## Equipment List:

Brand	Fixture	Quantity	Weight	Max Power Consumption	Venue requirement or tech procured
Chauvet	COLORband Pix-M USB	4	4.4kg	105W	Tech
Clay Paky	Axcor Spot 300	2	20kg	340W	Tech
Robe	Robin pointe	4	15kg	470W	Tech
Martin	Rush MH6 Wash	6	7.1kg	165W	Tech
Avolites	Tiger touch II	1	15.2kg	80W	Tech
Swisson	XSP-5B DMX-Splitter Box Double Rack	1	1.8kg	8W	Venue
Hardware		Quantity	Length	Max Load in plan	Venue requirement or tech procured
Truss Base		2			Tech
Box Truss		2	2m	20kg	Tech
Truss Plate		2			Tech
Pin		8			Tech
R-Clip		8			Tech
Stage Weight (12.5kg)		4			Tech
Safety Chain		10	35cm	21.7kg	Tech
table		1			Venue
Pre-Rigged Scaff pole		2	5m	51.3kg	Venue
Ratchet Straps		2			Tech
16A - 6x13A Distro		1			Venue
32A-2x16A Distro		2			Venue
32A Wall Distro		2			Venue

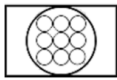
Cable	Quantity	Venue requirement or tech procured
5-pin DMX 3m	3	Venue
5-pin DMX 50cm	3	Venue
Powercon 3m	1	Venue
Powercon/DMX loom 3m<	4	Venue
Powercon/DMX loom 3m>	10	Venue
16A Extension Cable	3	Venue
32A Extension Cable	3	Venue
16A-powercon	2	Venue
13A-powercon	1	Venue
13A-IEC	1	Tech

## Rig Plans

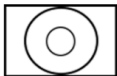
### Key



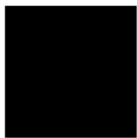
COLORband PiX-M USB



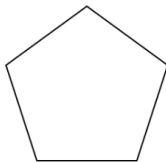
Rush MH 6 Wash



Robin Pointe



Verticle Truss



Axcor Spot 300



32A Cable



PowerCon Connection

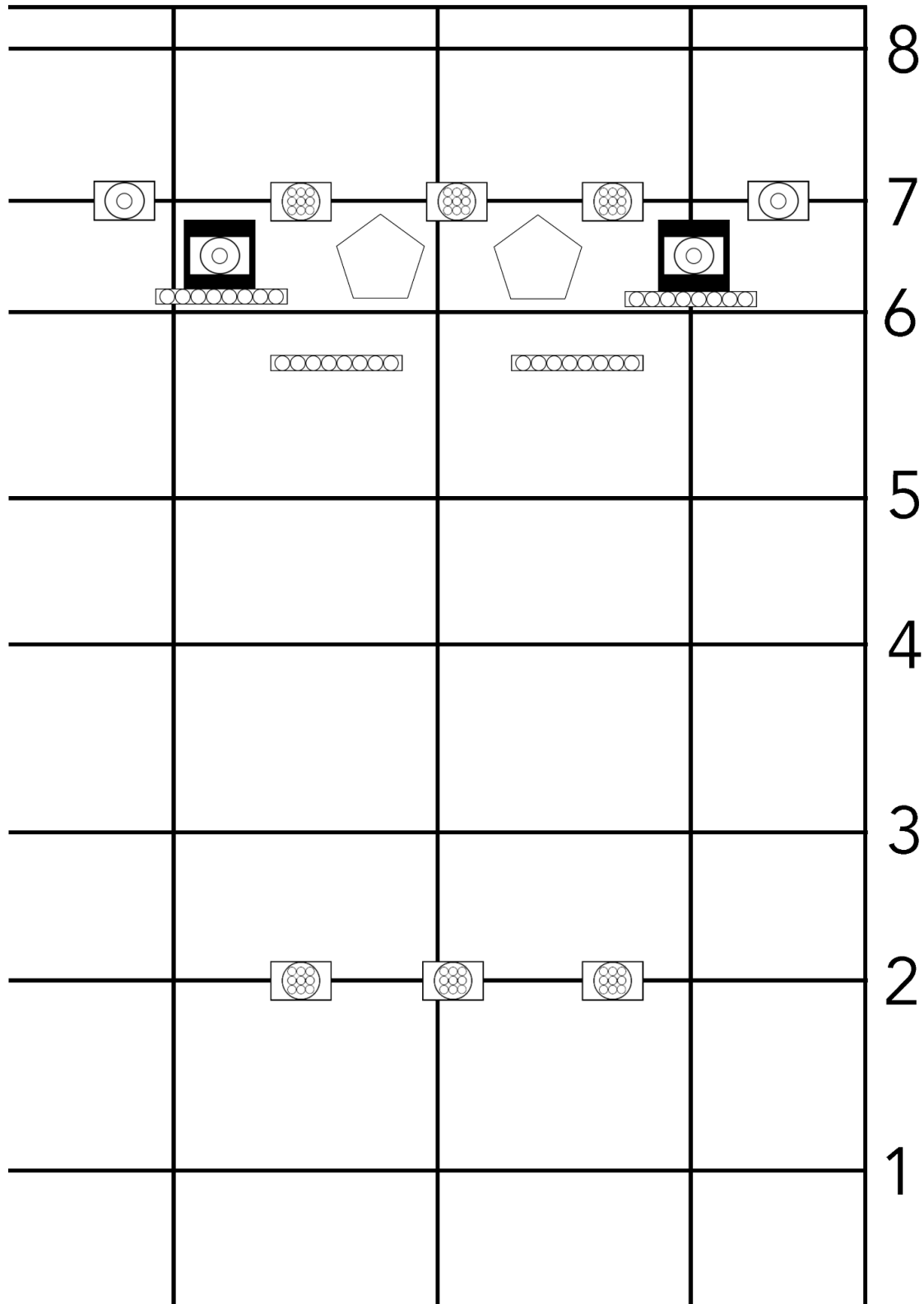


16A Cable

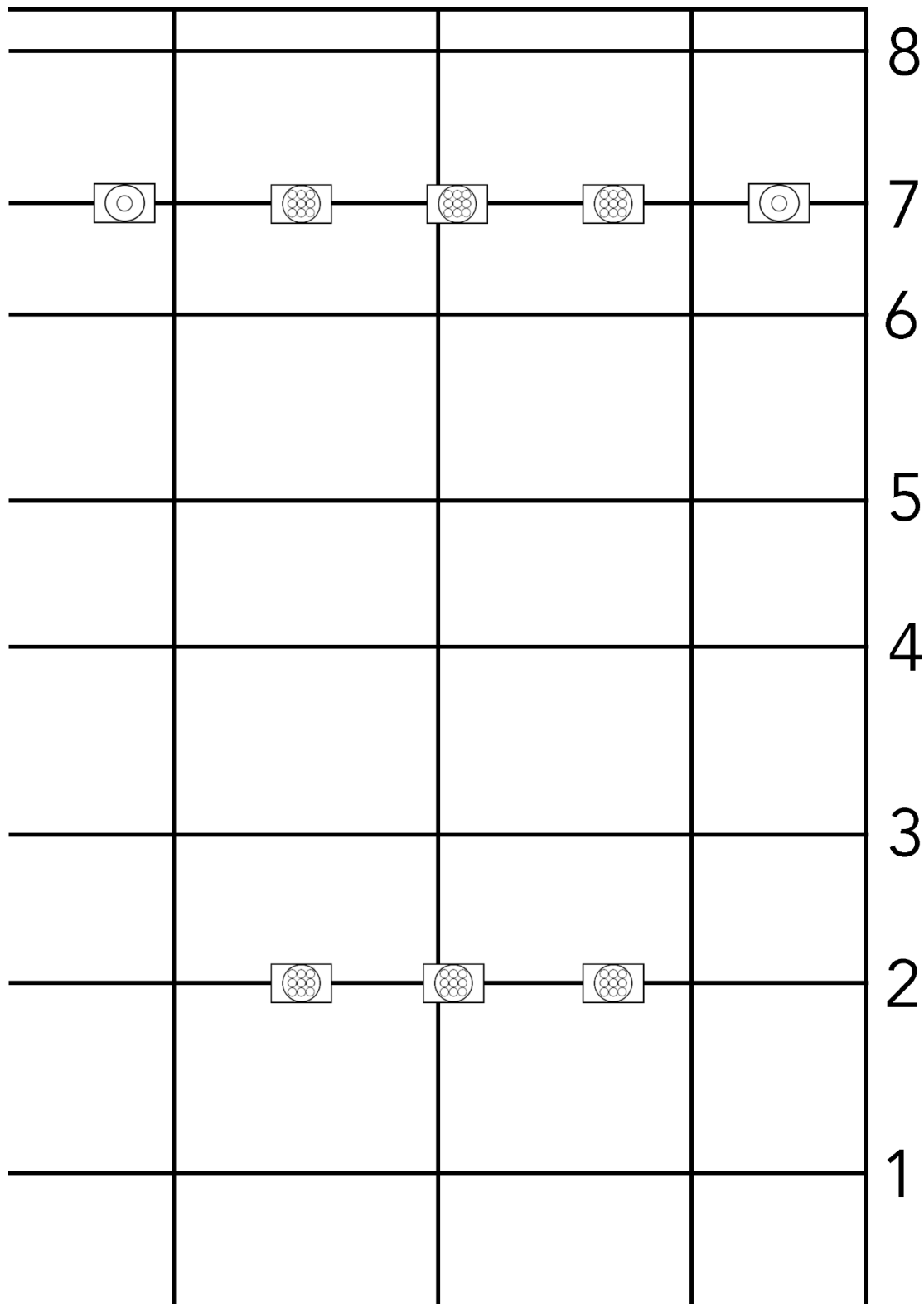


5-pin DMX

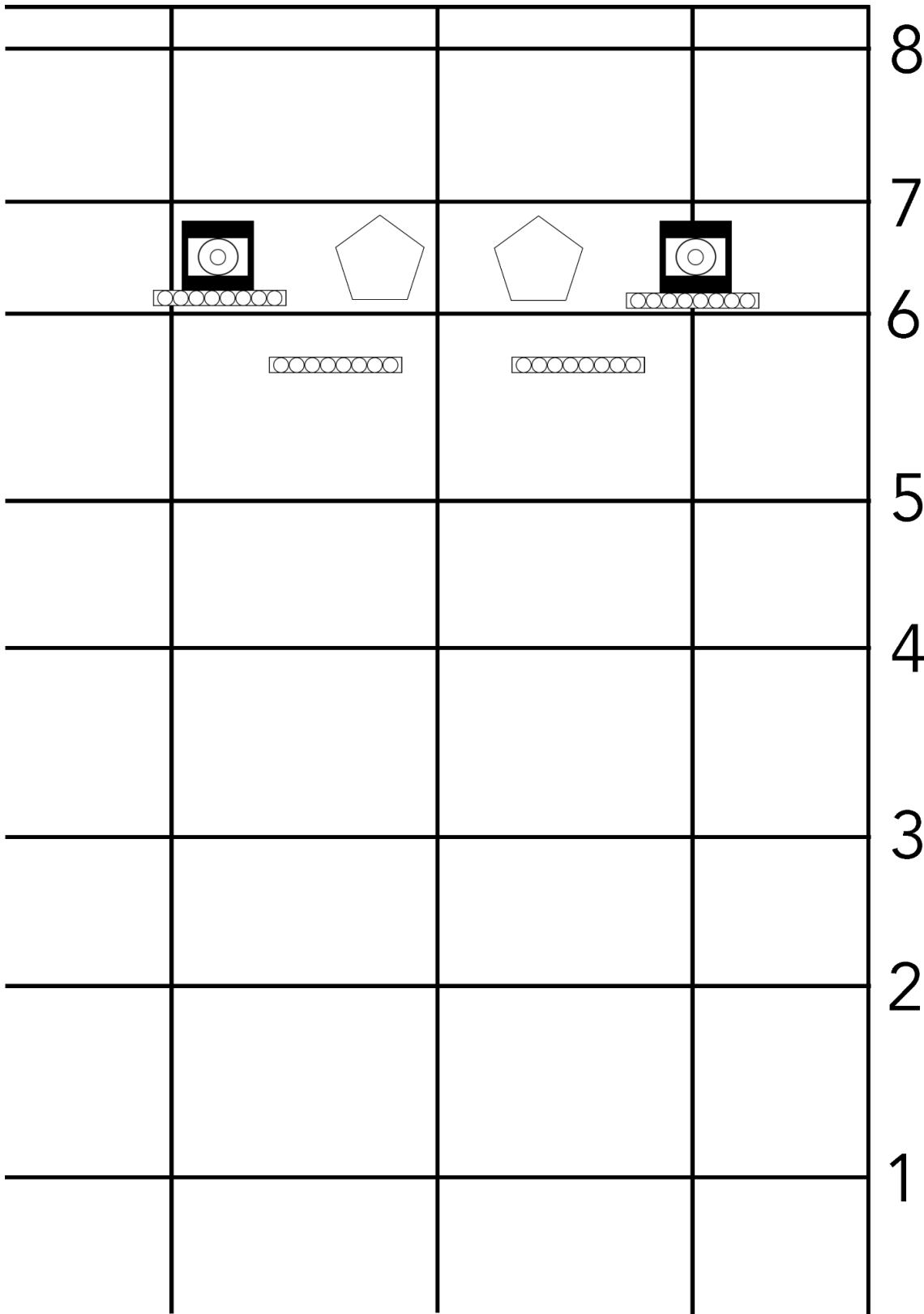
# Complete Rig



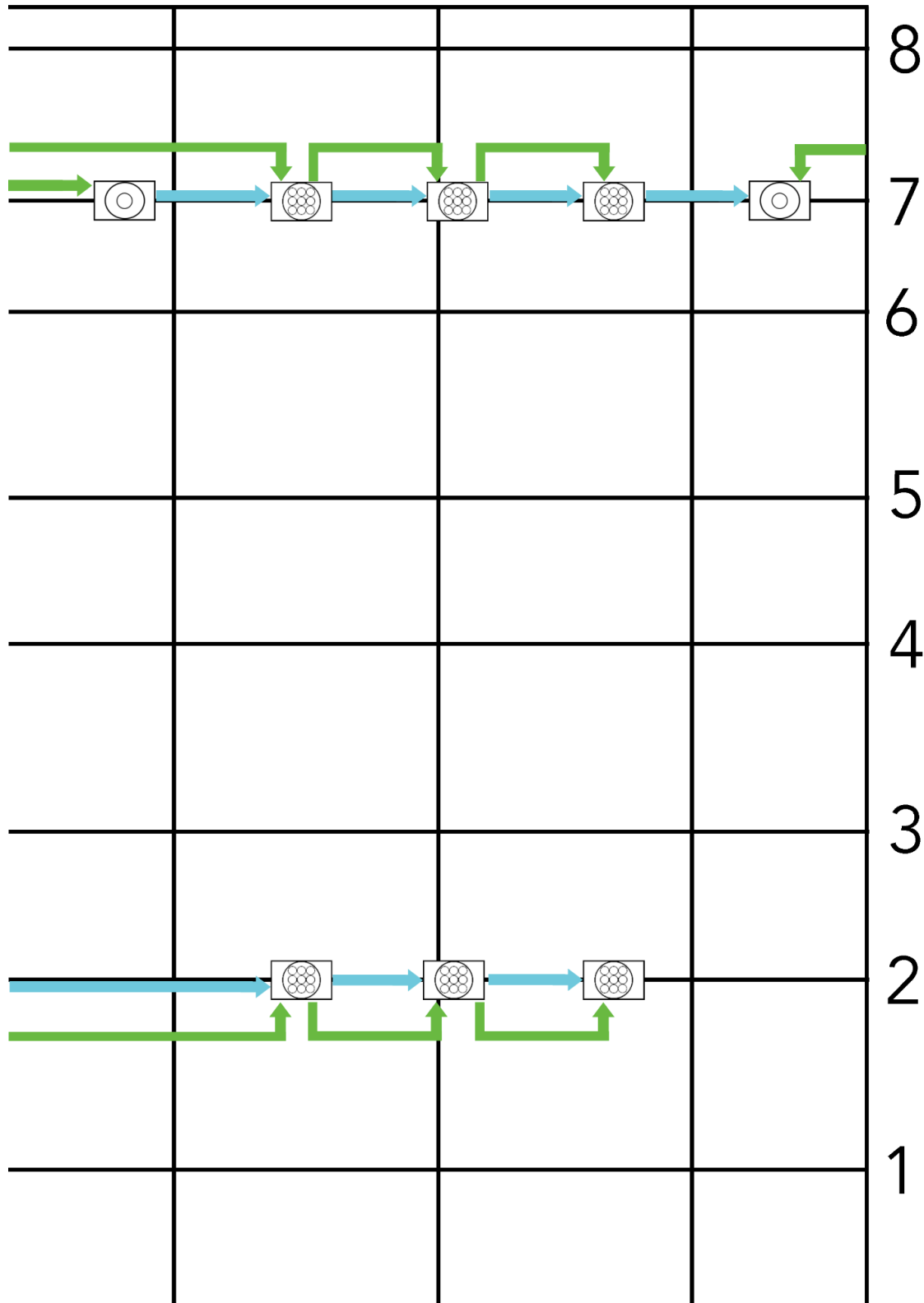
## Roof Rig



Ground Package

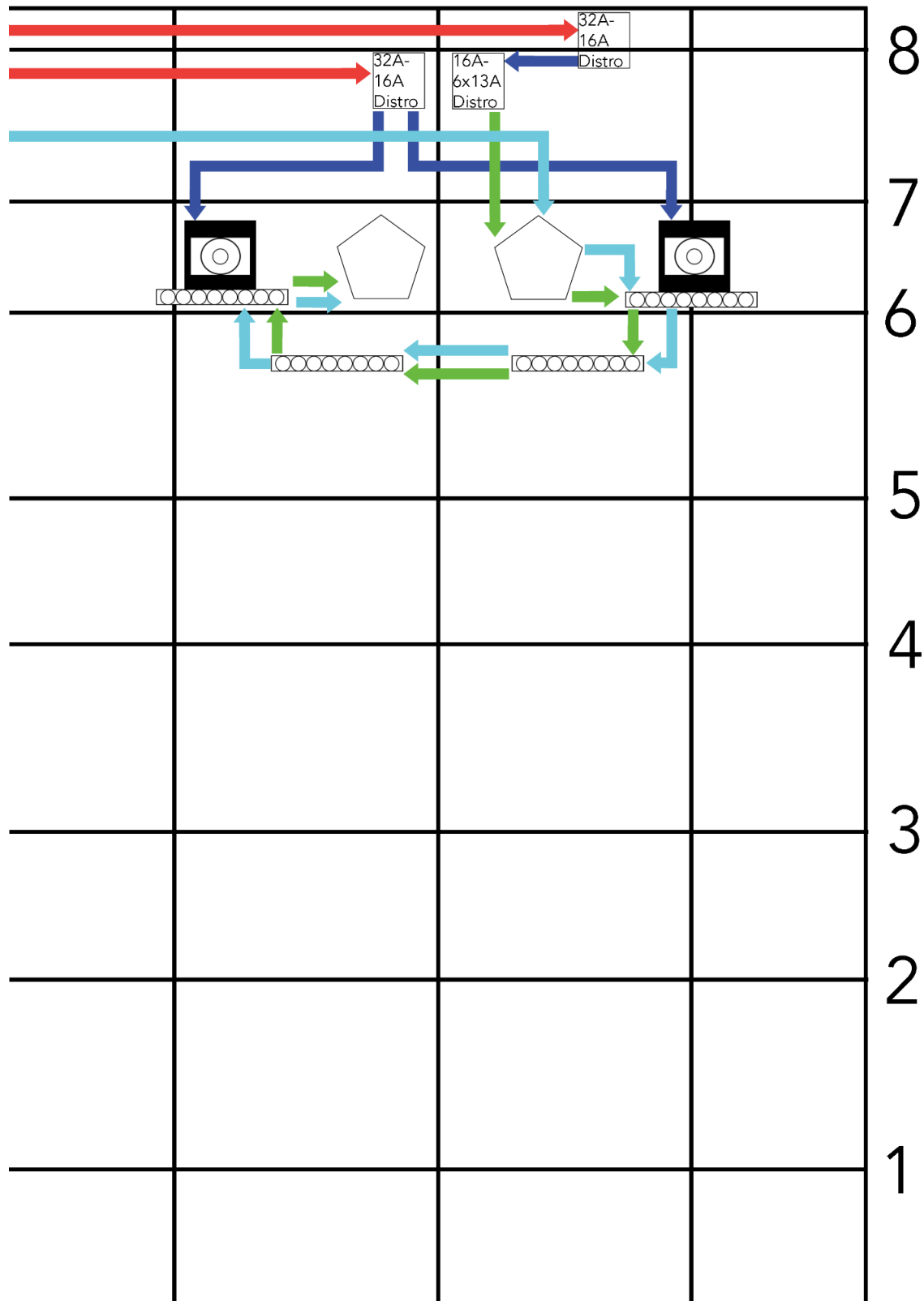


## Roof Power+DMX

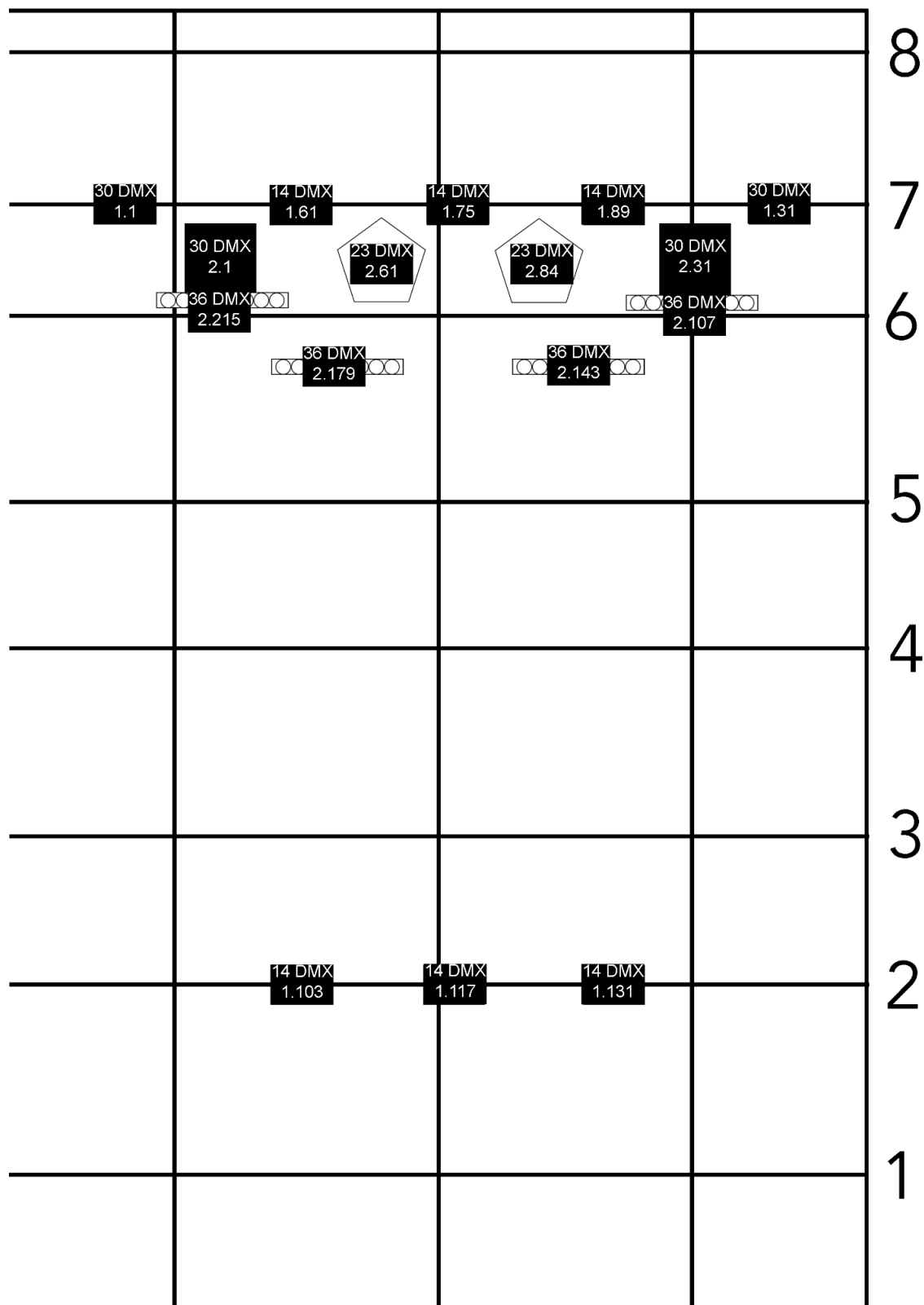




## Ground Power+DMX



## DMX Channels+universe



## Power Draw

### Bar 7

470W pointe 2x

161W wash 3x

Total Power draw = 1423W

Total Current draw = 6.18A

### Bar 2

161W Wash 3x

Total Power draw = 483

Total Current draw = 2.1A

## Ground Package

470W 2.04 pointe 2x

320W 1.39A Axcor Spot 300 x2

105W 1A Colorband Pix x4

Total Power draw = 2000W

Total Current draw = 8.69A

## Bar Load Weight

### Bar 7

Robin pointe 2 x 15kg

Rush MH-6 wash 3 x 7.1kg

Total Load = 51.3 kg

### Bar 2

Rush MH-6 wash 3 x 7.1kg

Total Load = 21.3

## Box Truss

Robin pointe 1 x 15kg

Total Load = 15kg

## Accessibility, Inclusivity and Diversity

The law lays out a set of requirements for the workplace under the equalities act 2010 that protects individuals under 8 protected characteristics these are: age, disability, Gender reassignment, marriage and civil partnership, race, religion or belief, sex and sexual orientation. (Legislation.gov.uk, 2010)

Ensuring everyone is included and individuals needs are met means that the workplace can be safer and more effective. The brief describes a member of the crew with a broken wrist. To make sure their needs are met any task requiring lifting or manual handling should be carried out by someone else. Any other requirements need to be communicated to others so they can be facilitated. If the crew members' needs aren't met then they may not be able to carry out any of their tasks properly and may cause further harm to themselves or others if they try to push themselves while injured.

LX 2 being a woman/nonbinary person should be treated with the same respect as anyone else on the crew. It should be ensured that everyone else on the crew treats them with respect. They're chosen pronouns should be respected and any discrimination should not be tolerated.

The band has a diverse makeup of ethnicities, they too should be treated with equal respect from everyone and discrimination should not be tolerated.

## References:

- Legislation.gov.uk (2010). Equality Act 2010. [online] legislation.gov.uk. Available at: <https://www.legislation.gov.uk/ukpga/2010/15/contents>. [Accessed 22 Apr.2024]
- Robe (n.d.). Pointe® | Products. [online] ROBE Lighting. Available at: <https://www.robe.cz/pointe> [Accessed 22 Apr. 2024].
- Claypaky (2018). Axcor Spot 300 Data Sheet. [online] E-assist.tech. Available at: <https://e-assist.tech/servlet/checkDocumentsFile?Id=1858> [Accessed 22 Apr. 2024].
- Chauvet (n.d.). COLORband PiX-M USB. [online] CHAUVET DJ. Available at: <https://www.chauvetdj.com/products/colorband-pix-m-usb/> [Accessed 22 Apr. 2024].
- Martin (n.d.). Martin RUSH MH 6 Wash. [online] Martin Lighting. Available at: <https://www.martin.com/en/products/rush-mh-6-wash#specifications> [Accessed 22 Apr. 2024].